

## SPECIAL SENSES

### Abstract

The special senses are highly specialized sensory systems that allow the human body to perceive complex environmental stimuli such as light, sound, chemical substances, and body position. Unlike general senses, special senses are localized in distinct organs with unique receptor structures and dedicated neural pathways. Vision, hearing, equilibrium, olfaction, and taste collectively contribute to perception, communication, balance, nutrition, and emotional experiences. This chapter provides an extensive and detailed discussion of each special sense, emphasizing anatomy, physiology, sensory pathways, common disorders, and pharmacological management of eye and ear conditions. A thorough understanding of the special senses is essential for students of medicine, nursing, pharmacy, and allied health sciences, as sensory dysfunction significantly affects quality of life and functional independence.

**Keywords:** Special senses, vision, hearing, equilibrium, olfaction, taste, sensory pathways, eye disorders, ear disorders, ophthalmic drugs, otic drugs

### Authors

**Dr. Alankar Shrivastav**

Associate Professor  
Pharmacy Academy  
Faculty of Pharmacy  
IFTM University  
Moradabad, India.

**Dr. Arun Kumar Mishra**

Professor, Sahu Onkar Saran  
Saran School of Pharmacy  
Faculty of Pharmacy  
IFTM University  
Moradabad, India.

**Dr. Navneet Verma**

Professor, Pharmacy Academy  
Faculty of Pharmacy  
IFTM University  
Moradabad, India.

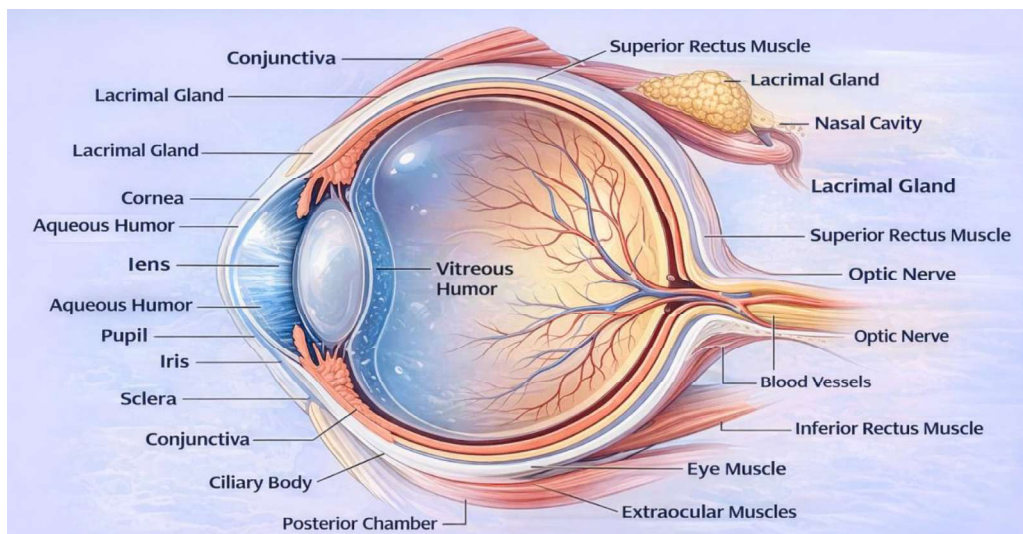
## I. INTRODUCTION TO SPECIAL SENSES

The special senses represent advanced sensory systems that detect specific forms of physical or chemical energy and convert them into neural signals. These senses are localized in specialized organs—the eyes, ears, nose, and tongue—which contain receptor cells adapted for particular stimuli. Compared to general senses, special senses provide more precise, discriminative, and complex sensory information.

Special senses are essential for survival and adaptation. Vision allows perception of shape, color, motion, and distance, enabling navigation and recognition. Hearing facilitates communication and environmental awareness, while equilibrium maintains posture and coordinated movement. Olfaction and taste are closely related chemical senses that contribute to food selection, digestion, and detection of harmful substances. These senses are also closely linked to memory, emotion, and behavior through their connections with higher brain centers. Damage or dysfunction of special senses can lead to significant physical, psychological, and social consequences, underscoring their clinical importance.

## II. VISION

**Anatomy of the Eye:** The eye is a complex optical organ designed to receive light and convert it into neural signals. It is housed within the bony orbit and protected by accessory structures such as eyelids, eyelashes, conjunctiva, and the lacrimal apparatus. These structures protect the eye from injury, dehydration, and infection.



**Figure 1:** Structure of the Human Eye

The eyeball consists of three concentric layers. The outer fibrous layer includes the sclera, which maintains shape and provides protection, and the cornea, which is transparent and responsible for most of the eye's refraction. The middle vascular layer, or uvea, includes the choroid, ciliary body, and iris. This layer supplies blood, controls pupil size, and regulates lens shape. The inner nervous layer, the retina, contains photoreceptors and neural cells essential for visual processing. The precise anatomical organization of these structures ensures efficient focusing of light and accurate visual perception.

**Physiology of Vision:** Vision is the process by which light energy is converted into electrical signals that can be interpreted by the brain. Light entering the eye is refracted by the cornea and lens and focused onto the retina. Within the retina, photoreceptor cells—rods and cones—initiate phototransduction, a biochemical process that converts light into nerve impulses.

Rods are highly sensitive and function in low-light conditions, providing night and peripheral vision. Cones operate in bright light and are responsible for color vision and high visual acuity. The distribution of cones in the fovea allows sharp central vision. Neural signals from photoreceptors are processed through retinal layers before being transmitted to the brain. Adaptation mechanisms allow the eye to adjust to changes in light intensity, ensuring effective vision across a wide range of environments.

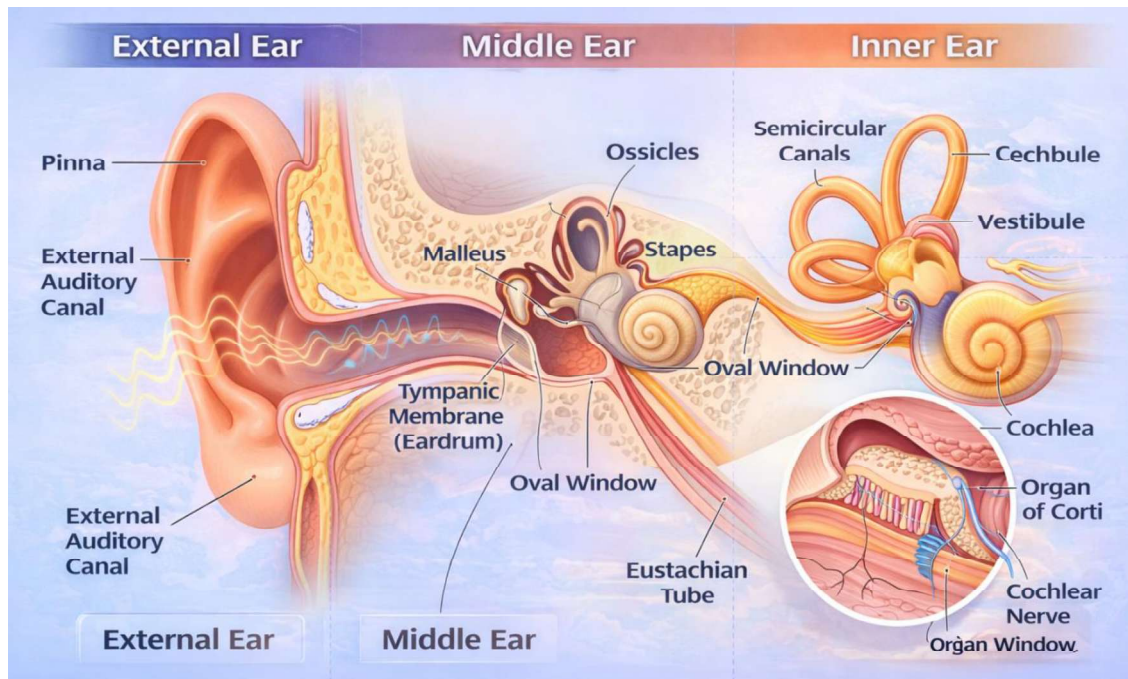
**Visual Pathway:** The visual pathway carries impulses from the retina to the visual cortex. Axons of retinal ganglion cells form the optic nerve, which partially crosses at the optic chiasma. This crossing ensures that visual information from each visual field is processed by the opposite cerebral hemisphere.

After the optic chiasma, fibers continue as optic tracts to the lateral geniculate body of the thalamus, a major relay center. From there, optic radiations transmit impulses to the primary visual cortex in the occipital lobe. Higher visual association areas analyze color, motion, depth, and form. This complex pathway enables visual perception, object recognition, and spatial awareness essential for coordinated movement and interaction with the environment.

### III. ANATOMY AND PHYSIOLOGY OF HEARING

#### 1. Anatomy of the Ear

The ear is the sensory organ for hearing and balance and is divided into three anatomical regions. The external ear consists of the auricle and external auditory canal, which collect and funnel sound waves toward the tympanic membrane. This structure enhances sound localization.



**Figure 2:** Structure of the Human Ear

The middle ear is an air-filled cavity containing three auditory ossicles—malleus, incus, and stapes—that amplify sound vibrations. The inner ear, or labyrinth, contains the cochlea for hearing and the vestibular apparatus for balance. The cochlea is a spiral-shaped structure filled with fluid and houses the organ of Corti, the sensory organ of hearing. This anatomical arrangement ensures efficient transmission and amplification of sound waves.

**Physiology of Hearing:** Hearing begins when sound waves strike the tympanic membrane, causing it to vibrate. These vibrations are transmitted through the ossicles to the oval window of the cochlea, generating fluid waves within the cochlea. Movement of cochlear fluid stimulates hair cells in the organ of Corti. Deflection of hair cell stereocilia opens ion channels, resulting in depolarization and generation of nerve impulses. These impulses encode sound frequency and

intensity. Damage to hair cells due to noise, aging, or toxins results in sensorineural hearing loss, which is often irreversible, highlighting the vulnerability of auditory receptors.

**Auditory Pathway:** Auditory impulses travel from the cochlea through the cochlear nerve to brainstem nuclei. From there, impulses ascend through multiple relay centers, including the inferior colliculus and medial geniculate body, before reaching the auditory cortex in the temporal lobe.

This bilateral and complex pathway allows sound localization, discrimination of pitch and intensity, and interpretation of speech and music. Integration at cortical levels enables comprehension and meaningful auditory perception.

**Equilibrium (Balance):** Equilibrium is the sense that maintains balance, posture, and spatial orientation. It is mediated by the vestibular apparatus of the inner ear, which includes three semicircular canals and two otolith organs—the utricle and saccule. The semicircular canals detect rotational movements of the head, while the otolith organs detect linear acceleration and head position relative to gravity.

Sensory signals from vestibular receptors are transmitted to the brainstem and cerebellum and integrated with visual and proprioceptive input. This integration allows coordinated eye movements, stable posture, and smooth locomotion. Disorders of equilibrium result in vertigo, dizziness, nausea, and imbalance, significantly impairing daily activities and increasing the risk of falls.

#### **IV. OLFACTION**

Olfaction is the sense of smell and is mediated by olfactory receptors located in the olfactory epithelium of the nasal cavity. Odorant molecules dissolve in mucus and bind to receptors on olfactory sensory neurons, triggering electrical impulses.

These impulses pass through the olfactory bulb and tract to the olfactory cortex and limbic system. Unlike other senses, olfactory pathways bypass the thalamus, allowing rapid emotional and behavioral responses. Olfaction plays a key role in appetite, hazard detection, and emotional memory. Loss of smell can affect nutrition, safety, and psychological well-being.

## **V. TASTE (GUSTATION)**

Taste is the sense that detects chemical substances in food and beverages. Taste receptors are located in taste buds on the tongue, soft palate, and pharynx. Five basic taste modalities—sweet, salty, sour, bitter, and umami—are recognized, each associated with specific nutrients or potentially harmful substances.

Taste receptor cells transmit impulses through cranial nerves to the gustatory cortex. Taste perception is closely integrated with olfaction, texture, and temperature, producing the sensation of flavor. Alterations in taste can affect appetite, nutrition, and quality of life, particularly in illness or aging.

## **VI. SENSORY PATHWAYS AND INTEGRATION**

Sensory pathways are highly organized neural routes that transmit impulses from specialized sensory receptors to specific regions of the cerebral cortex.

Each pathway typically consists of a first-order neuron that carries impulses from the receptor to the central nervous system, a second-order neuron that relays information within the CNS (often crossing to the opposite side), and a third-order neuron that projects to the sensory cortex. This orderly arrangement ensures accurate localization and interpretation of sensory stimuli.

Most sensory pathways relay information through the thalamus, which acts as a major integration and processing center. The thalamus filters sensory input, modulates signal intensity, and directs impulses to appropriate cortical areas. In the cerebral cortex, sensory information is interpreted consciously, allowing perception of form, intensity, duration, and spatial characteristics of stimuli.

Integration of sensory input from different modalities is essential for coordinated responses. For example, balance and posture depend on combined input from visual, vestibular, and proprioceptive systems. Disruption of sensory pathways or integration centers can result in sensory loss, altered perception, or impaired coordination, highlighting the clinical importance of intact sensory processing.

## **VII. DISORDERS OF SPECIAL SENSES**

Disorders of the special senses arise from structural abnormalities, infections, trauma, degenerative changes, vascular compromise, or neurological disease. These disorders can significantly impair communication, mobility, nutrition, and

safety. Early recognition and management are crucial to prevent permanent damage and improve functional outcomes.

Visual disorders include refractive errors, cataracts, glaucoma, and retinal diseases, which may lead to blurred vision, visual field loss, or blindness. Auditory disorders may be conductive, involving the external or middle ear, or sensorineural, involving damage to cochlear hair cells or auditory nerves. Vestibular disorders affect balance and spatial orientation, causing vertigo, dizziness, and unsteady gait.

Olfactory and gustatory disorders often result from infections, head injury, aging, or neurodegenerative diseases. Although sometimes underestimated, loss of smell and taste can impair appetite, nutrition, and detection of hazards such as smoke or spoiled food. Comprehensive evaluation and multidisciplinary management are often required for sensory disorders.

## **VIII. DRUGS FOR EYE DISORDERS**

Drugs used in eye disorders are designed to act locally on ocular tissues while minimizing systemic absorption. Ophthalmic preparations include eye drops, ointments, and gels, formulated to ensure adequate contact time with ocular surfaces. These drugs are used in a wide range of conditions, including infections, inflammation, glaucoma, and diagnostic procedures.

Antibiotics are commonly prescribed for bacterial conjunctivitis and keratitis, while antiviral agents are used for viral eye infections. Anti-inflammatory drugs, including corticosteroids and non-steroidal agents, reduce inflammation and allergic responses. In glaucoma, drugs that reduce aqueous humor production or increase its outflow are essential to lower intraocular pressure and prevent optic nerve damage.

Correct administration technique, patient compliance, and monitoring for adverse effects are critical for effective ophthalmic therapy. Improper use may reduce efficacy or cause complications such as increased intraocular pressure or infection.

## **IX. DRUGS FOR EAR DISORDERS**

Pharmacological management of ear disorders aims to control infection, inflammation, pain, vertigo, and nausea while preserving hearing and balance. Otic drugs are usually administered as ear drops to deliver medication directly

to the affected site. Antibiotics are commonly used to treat otitis externa and otitis media, often combined with anti-inflammatory agents to reduce pain and swelling.

Vestibular suppressants and antiemetics are used in conditions associated with vertigo and motion sickness. These drugs reduce abnormal vestibular signaling and alleviate symptoms such as dizziness, nausea, and vomiting. In some cases, systemic drugs may be required for inner ear disorders or associated neurological conditions.

Careful drug selection is essential because some medications can be ototoxic and cause permanent hearing loss, particularly if the tympanic membrane is perforated. Monitoring and patient education play a key role in safe and effective management of ear disorders.

## **X. CONCLUSION**

The special senses are complex systems that enable perception of the external world and maintenance of balance and orientation. Understanding their anatomy, physiology, disorders, and pharmacological management is essential for clinical practice and preservation of sensory function.